

## Neck Speaker & Personal Hearing Amplifier



Model: ABH-130

## Quick Start Guide

Place BeHear PROXY on your shoulders and enjoy a rich, clear, and comfortable listening experience for:

- Television
- Streamed music
- Mobile calls
- Gaming

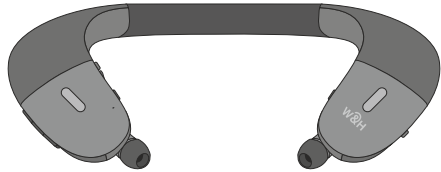


Use its extractable earphones for privacy and personalized hearing amplification.

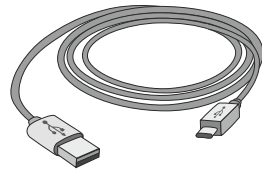


*Suitable for use  
with hearing aids*

## 1 What's in the Box?



Neck Speaker



Charging cable

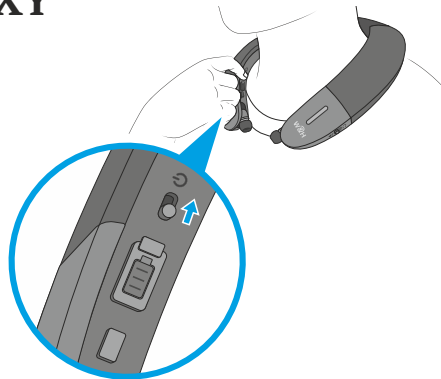


Ear bud pairs (variety of types and sizes)

## 2 Turn ON BeHear PROXY

Shift the power button up and hold it until the unit vibrates and the LED turns light blue. A voice prompt will be played.

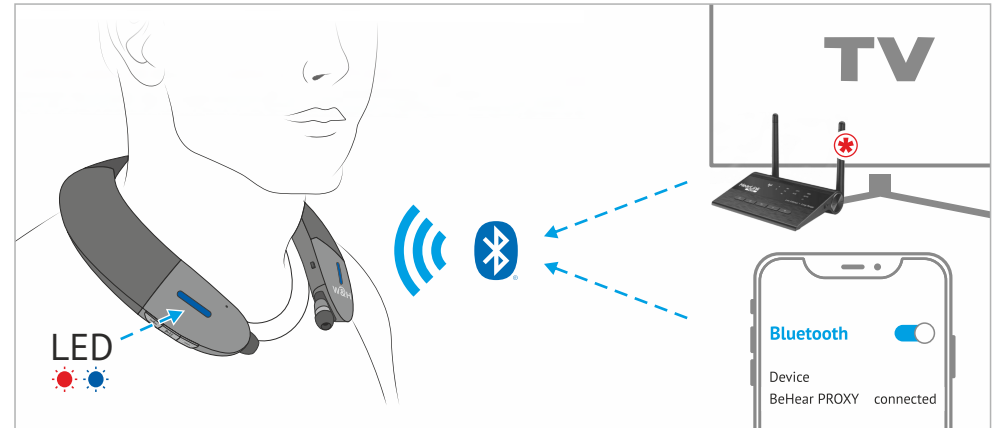
To turn BeHear PROXY OFF repeat this action.



Verify that the mode switch is set to **Loudspeaker** position.



## 3 Connect to Bluetooth® Device



Purchased separately

### First Time Connection

- Turn BeHear PROXY ON. It will automatically enter pairing mode (the LED will blink in alternating red and blue).
- If pairing with a smartphone, choose "BeHear PROXY" from the list of available Bluetooth devices.

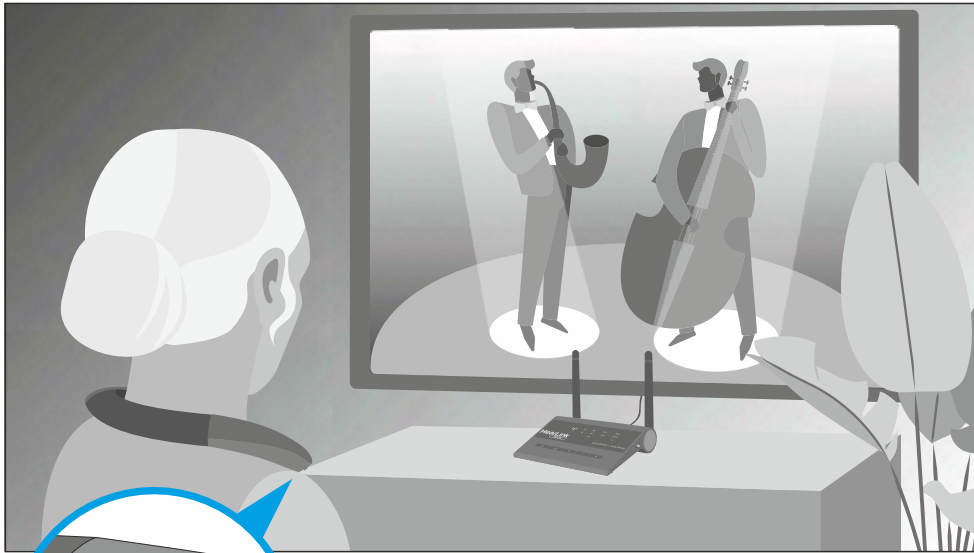


*For connecting to other devices, such as a TV set, audio transmitter, etc., please refer to their respective manuals.*

### Connecting to another device

- Turn OFF BeHear PROXY.
- Shift its power switch up and hold it until the voice prompt says: "Pairing mode active" and the LED blinks in alternating red and blue.
- Complete the pairing process as directed in the manual of the new Bluetooth device.

## Watching Television



Connect BeHear PROXY to your TV set and manage the audio from the right-hand side of the neck speaker.



**Short press** to mute/unmute the sound, when using the HearLink PLUS transmitter.



**Increase** the volume.



**Decrease** the volume.



*If your TV doesn't have a built-in Bluetooth transmitter, we recommend purchasing our **HearLink® PLUS** - a high quality, long-range Bluetooth transmitter.*

## Mobile Calls



Connect BeHear PROXY to your smartphone and handle calls from the right-hand side of the neck speaker.



**Short press** to accept an incoming call.

**Short press** to end the active call.

**Long press** to reject an incoming call.

**Double press** to redial last number.



**Increase** the call volume.



**Decrease** the call volume.

## Music / Gaming / Video Calls



Connect BeHear PROXY to your smartphone, music player, game console, laptop, or other audio streaming device and manage audio play from the right-hand side of the neck speaker.



**Short press** to toggle Play/Pause audio.



**Short press** to increase the volume.

**Press and hold** to advance to the next audio track.




**Short press** to decrease the volume.

**Press and hold** to return to the previous audio track.

## Earphones Mode

Handle phone calls and listen to music privately with your BeHear PROXY by using the extractable earphones housed in the neck speaker.

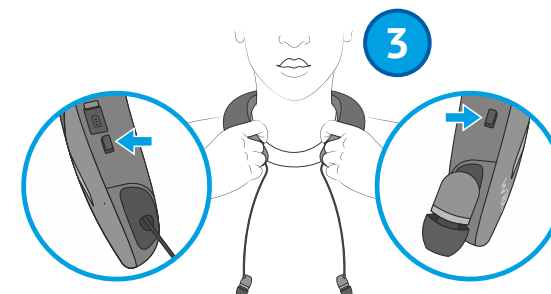
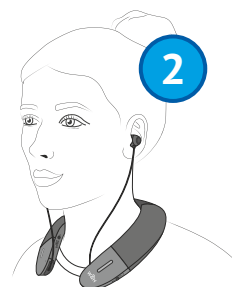
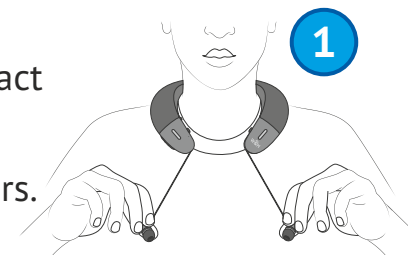
### • Switch the Mode

Set the mode switch to “Earphones”. 



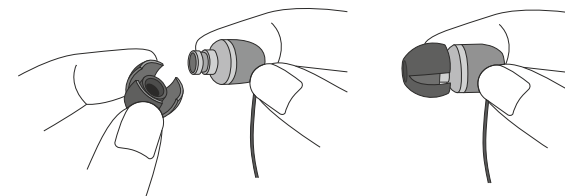
### • Extract the Earphones

1. Pull the earphones gently to extract the cables.
2. Insert the earphones into your ears.
3. Press the buttons to retract the cables, or to adjust their length.



### • Choose Earbuds

Experiment to find the buds that fit your ears most comfortably for continuous wear.



Personalize, manage, and get help for your BeHear PROXY neck speaker with the free **W&H BeHear** smartphone application.




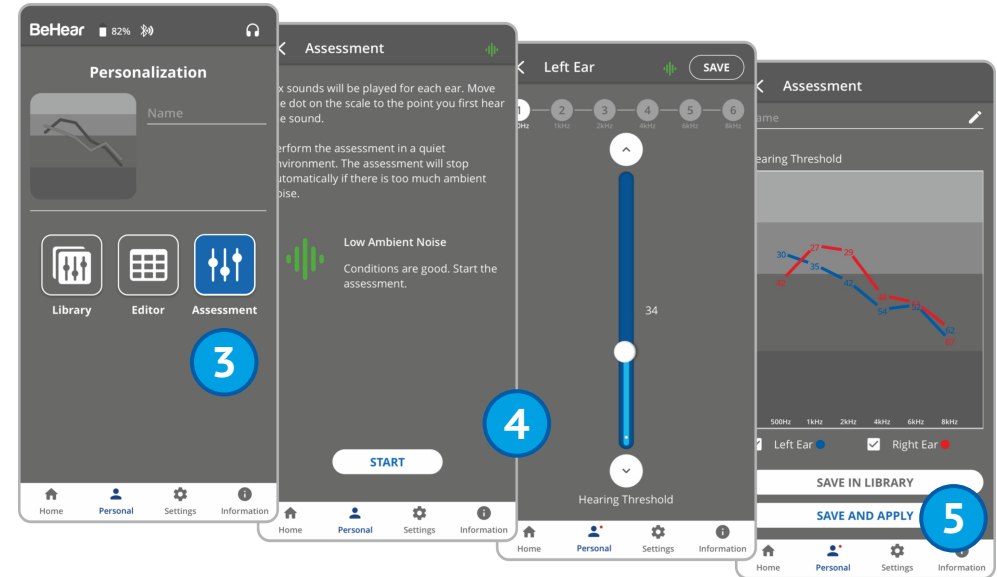
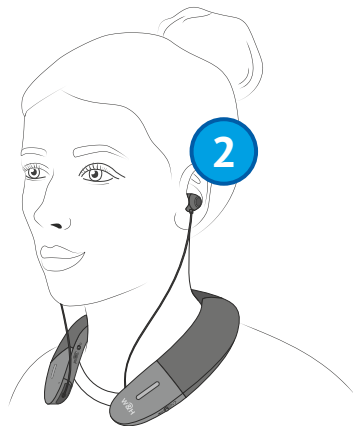
### ● Download the App



### ● Personalize What You Hear

Adjust the acoustic performance of the neck speaker to suit your own hearing preferences.

1. Set the mode switch to "Earphones". 
2. Put on the neck speaker, inserting the ear buds into your ears.
3. Choose **Personal >> Assessment** in the W&H BeHear app.
4. Follow the prompts to perform the hearing assessment.
5. Save and apply the results to the neck speaker.



### ● Manage Your BeHear PROXY



## Slow Down Speech in Mobile Calls\*



Improve intelligibility during a mobile call by slowing down incoming speech using **EasyListen™**.



**Press and hold** briefly to slow down the speech.



**Press and hold** briefly to return to the normal speech tempo.

\* In Loudspeaker and Earphones modes  

## Stay Safe and Alert\*\*

To stay aware of important world sounds and nearby conversation during audio play, activate the **ListenThrough™** function. Ambient sounds will pass to your ears when the earphones are inserted.

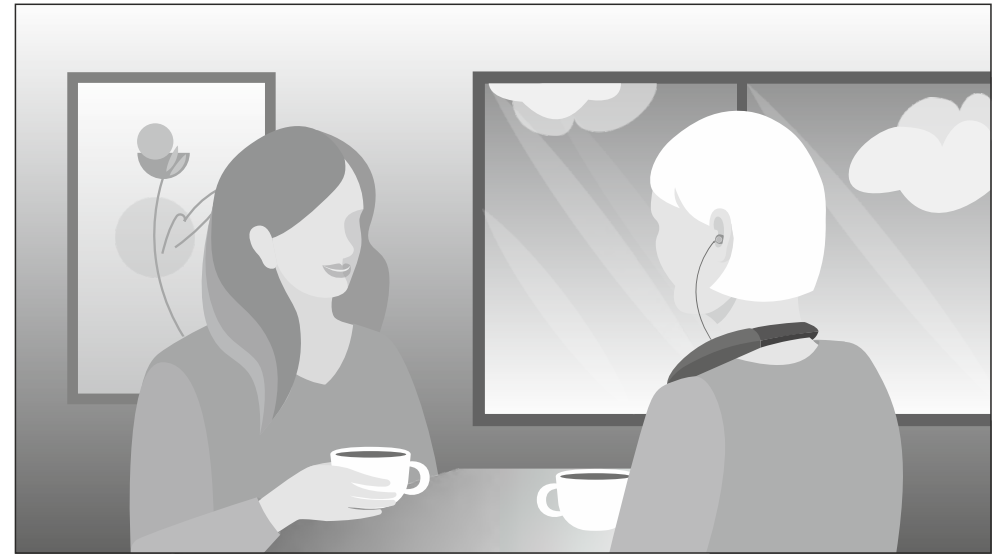
To enable this function, go to **Settings >> Device** menu in the W&H BeHear app.



**Press and hold** briefly to turn ambient sounds ON/OFF.

\*\* In Earphones mode only 

## Amplify Live Conversations\*\*\*



To use BeHear Proxy as a back-up personal sound amplifier:

1. Choose the most comfortable earbuds.
2. Set the mode switch to “Earphones”.
3. Personalize what you hear using the W&H BeHear app (see [section C](#)).



**Press and hold** briefly to turn personalized sound amplification ON/OFF.



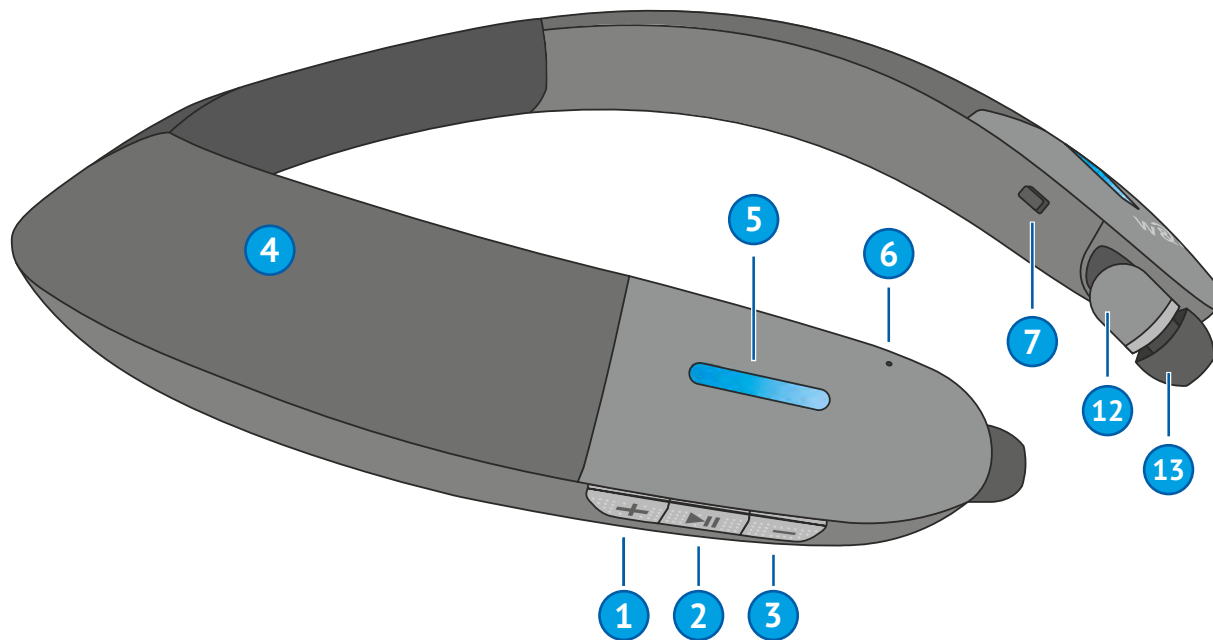
**Increase** the volume.



**Decrease** the volume.

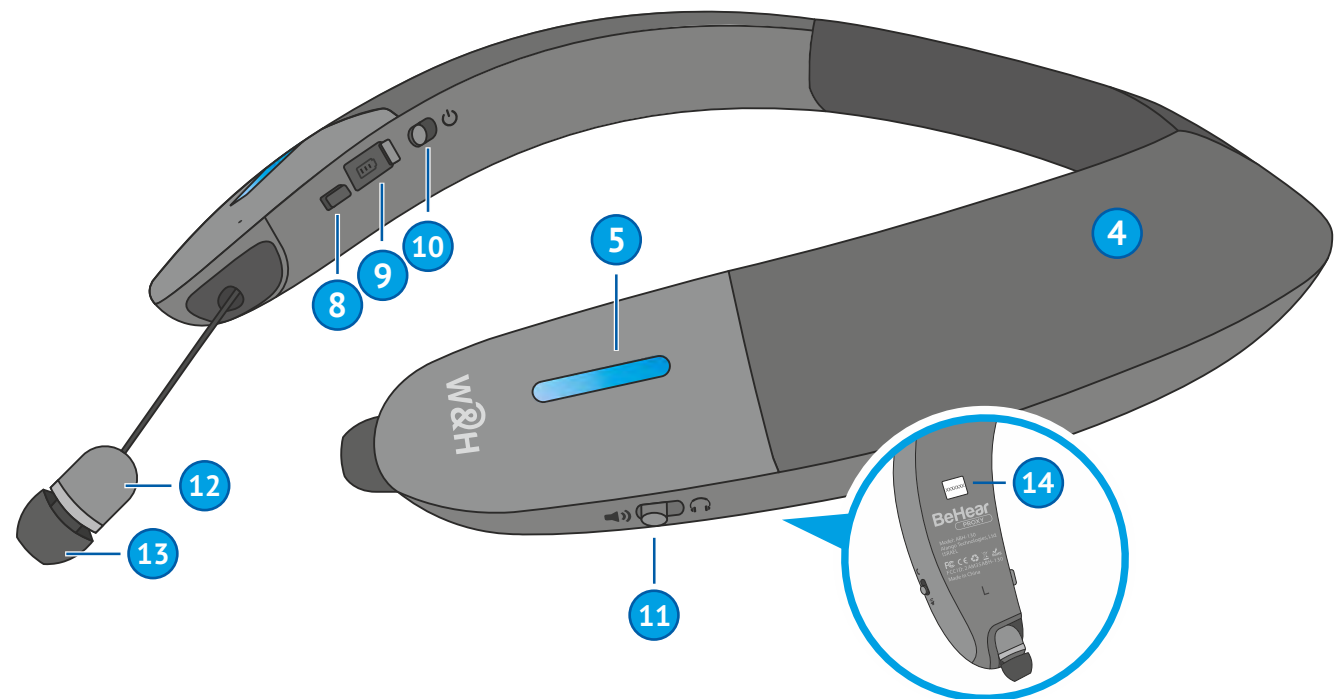
\*\*\* In Earphones mode only 





- 1. Volume up
- 2. Multifunction button
- 3. Volume down
- 4. Loudspeakers (left & right)
- 5. Notification LED (left & right)
- 6. Microphone
- 7. Left retract button

- 8. Right retract button
- 9. Micro USB charging port
- 10. Power ON/OFF switch
- 11. Mode switch
- 12. Extractable earphones (left & right)
- 13. Silicone earbuds (left & right)
- 14. Serial number label



# F

## LED Indication

Light blue (1s flash)	● Neck speaker is powered ON/OFF (toggle)
Purple, blinking	● Assistive function active
Red/blue alternating	● Bluetooth pairing mode
Red, blinking	● Disconnected from paired Bluetooth device, or battery low
Red, steady	● Charging
Green, steady	● Battery fully charged

To check battery level, briefly press power button when the unit is turned on:

Green	● Good > 50%
Yellow	● Fair > 10% and < 50%
Red, blinking	● Low < 10%

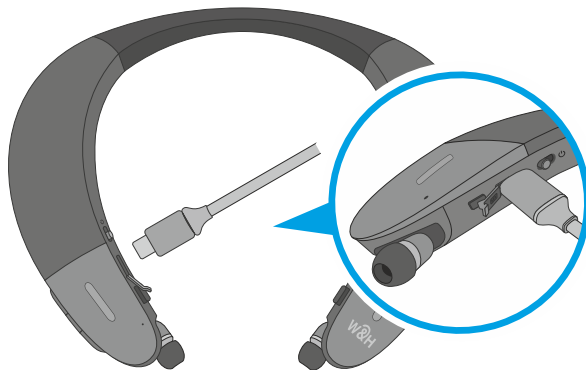
# G

## Charging the Battery

Charge the neck speaker directly from a wall outlet or computer USB port.

The LED indicator is red during charging and turns green when the neck speaker is fully charged.

Full charging takes up to 3 hours.



# H

## Troubleshooting

No sound	<ul style="list-style-type: none"> <li>💡 Verify battery is charged.</li> <li>💡 Adjust volume level.</li> <li>💡 Check ear caps for debris.</li> </ul>
Ear buds are uncomfortable	💡 Experiment with different silicone ear tips.
Phone calls and/or music not routed	💡 Verify Bluetooth pairing.
Bluetooth disconnects often	💡 Verify that you are not more than 10 meters (30 feet) from the Bluetooth device.
Hearing interruptions	💡 Silence phone tones (alerts, notification sounds, key taps, etc.).
Unexpected behavior	💡 Reset the neck speaker by connecting it to the charger.

# I

## Support



### Video Tutorials:

<https://bit.ly/bhproxy-video>



**U.S. & Canada:** (888) 215 0620 (toll free)  
[support.usa@WearAndHear.com](mailto:support.usa@WearAndHear.com)

**Elsewhere:** [support@WearAndHear.com](mailto:support@WearAndHear.com)



[www.WearAndHear.com](http://www.WearAndHear.com)

